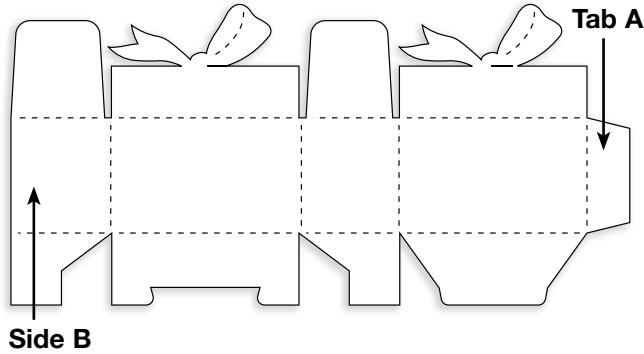


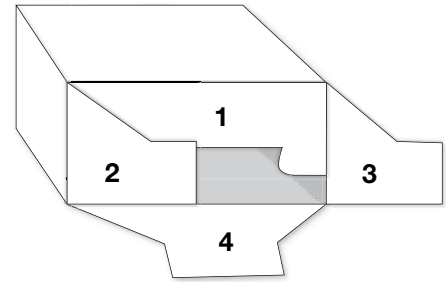
**REQUIREMENTS:**

- Machine with 10" or wider opening

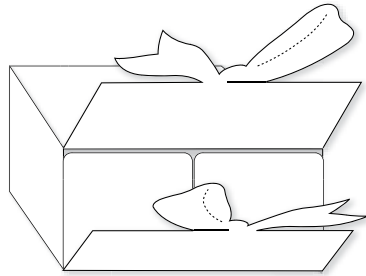
## Box #14 (Bow)



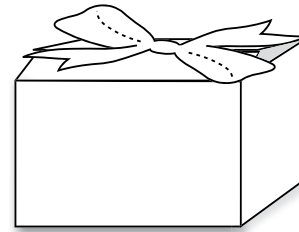
**Figure A**



**Figure B**



**Figure C**



**Figure D**

1. Die-cut XL Box #14 from cardstock or other paper.
2. Decorate Box while it is still flat.
3. Fold on all perforated or crease lines. Use double-sided tape or glue to seal Tab A to Side B (Figure A).
4. To seal the bottom of the Box, fold flaps 1, 2, 3 and 4 in that order (Figure B). The tip of flap 4 slides into the notch in flap 1 for closure.
5. To close the top, fold in the two plain tabs. Fold in the two halves of the ribbon and slide together (Figures C and D).

### 18347 Box #14 (Bow) (XL)

- Die available with perforation or crease rule. • Crease rule dies require Premium Cutting Pad.