

Box #1

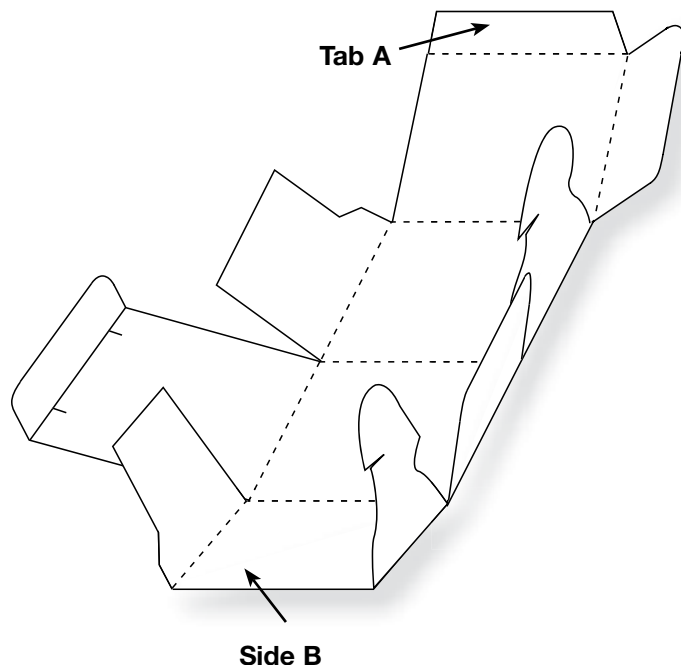


Figure A

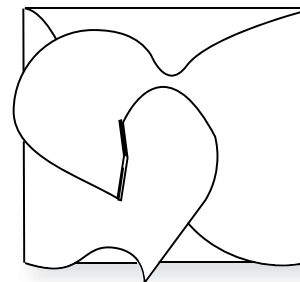


Figure B

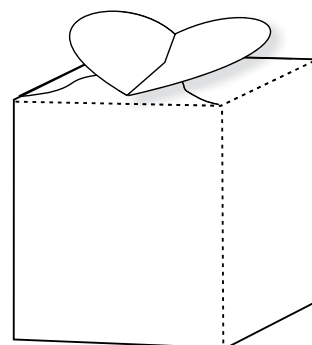


Figure C

1. Die-cut Box #1 from cardstock or other paper.
2. Decorate Box while it is still flat.
3. Fold on all the perforated or crease lines (Figure A).
4. Apply glue or double-sided tape to Tab A and secure to Side B (Figure A).
5. Slide heart petals together using notches (Figures B and C).

12454 Box #1

• Die available with perforation or crease rule. • Crease rule dies require Premium Cutting Pad.