

REQUIREMENTS:

- Machine with 10" or wider opening

Box #2

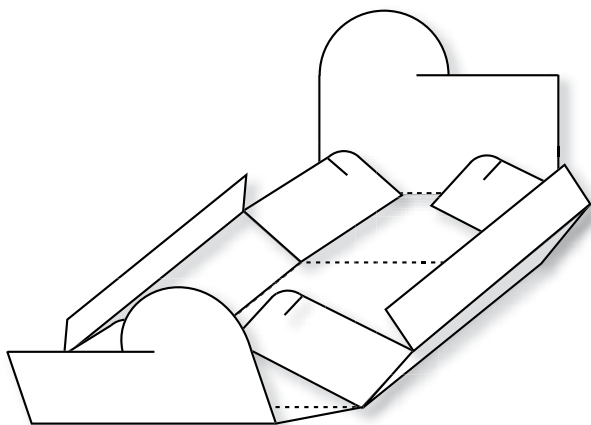


Figure A

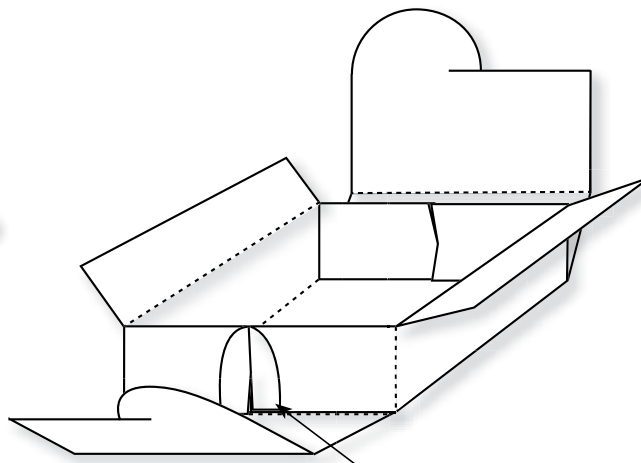


Figure B

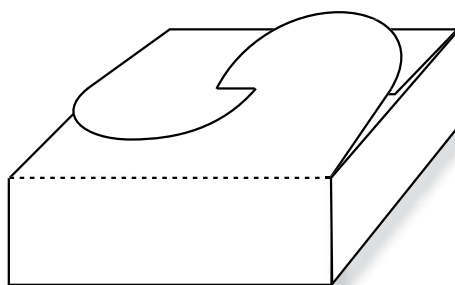


Figure C

1. Die-cut XL Box #2 from cardstock or other paper.
2. Decorate the Box while it is still flat.
3. Fold on all perforated or crease lines (Figure A).
4. Pull the sides together and fasten at slits (Figure B).
5. Secure top by interconnecting tabs at slits (Figure C).
 - No adhesive necessary.
 - Die-cut out of wallpaper, wrapping paper or student-designed paper.

12450 Box #2 (XL)

- Die available with perforation or crease rule. • Crease rule dies require Premium Cutting Pad.