

Box #3

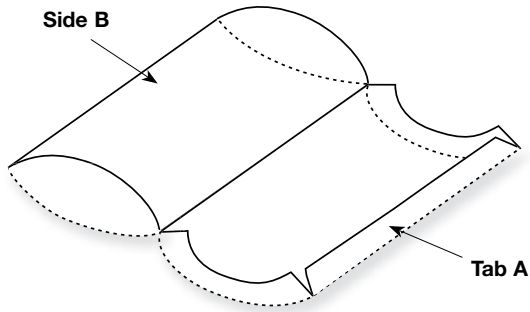


Figure A

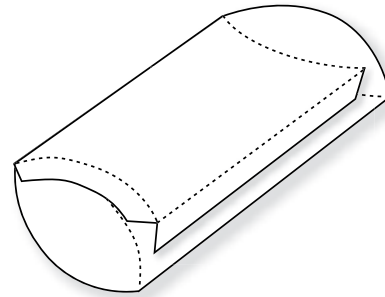


Figure B

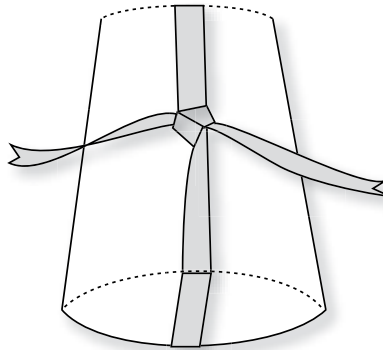


Figure C

1. Die-cut Box #3 from cardstock or other paper.
 2. Decorate the Box while it is still flat.
 3. Fold on all perforated or crease lines (Figure A).
 4. Adhere Tab A to Side B with glue or double-sided tape (Figure B).
 5. Push on Box at sides to puff it out and fold top and bottom in to close. Top and bottom should not be taped to allow opening and closing of the Box (Figure C).
- This “pillow box” can be die-cut from a variety of materials: wallpaper, suede paper, etc.
 - Finish with a flair by adding ribbon or raffia.

12452 Box #3

- Die available with perforation or crease rule. • Crease rule dies require Premium Cutting Pad.