

REQUIREMENTS:

- Machine with 10" or wider opening

Box #4A

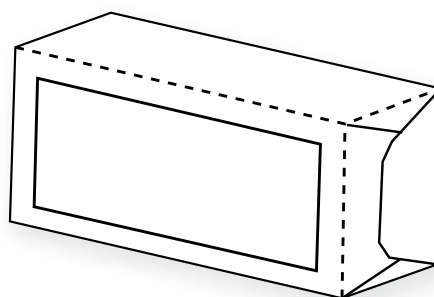
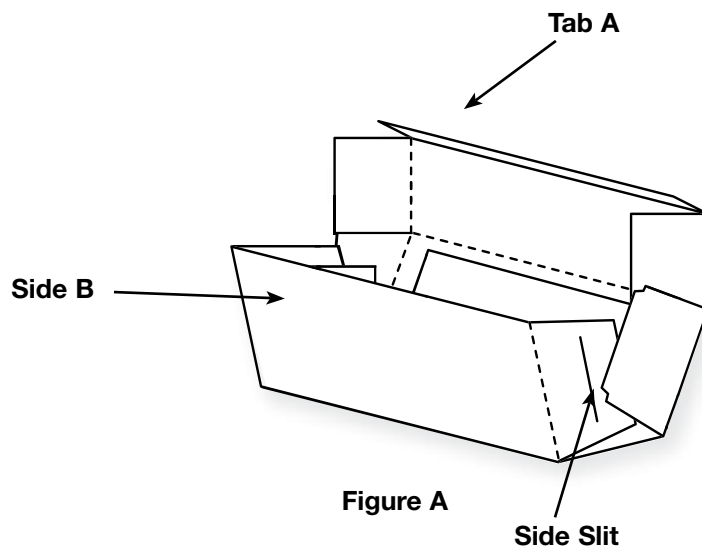


Figure B

1. Die-cut XL Box #4A from cardstock or other paper.
2. Decorate the Box while it is still flat. Use a piece of clear plastic or page protector taped behind the Box opening to create a window.
3. Fold on all perforated or crease lines.
4. Adhere Tab A to Side B using glue or double-sided tape (Figure A).
5. Close the end flaps and tuck the tabs into the slits provided (Figure B).

12434 Box #4A (XL)

- Die available with perforation or crease rule. • Crease rule dies require Premium Cutting Pad.