

REQUIREMENTS:

- Machine with 10" or wider opening

Box #5 (Hexagon)

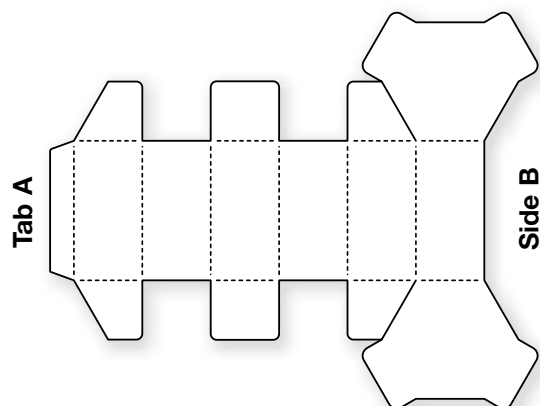


Figure A

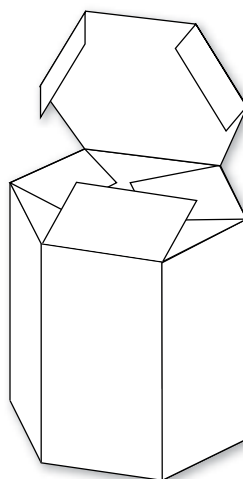


Figure B

1. Die-cut XL Box #5 from cardstock or other paper.
2. Decorate the Box while it is still flat.
3. Fold on all perforated or crease lines.
4. Glue Tab A to Side B (Figure A).
5. Close the flaps at the bottom and top of the Box (Figure B).

12438 Box #5 (Hexagon) (XL)

- Die available with perforation or crease rule. • Crease rule dies require Premium Cutting Pad.