

REQUIREMENTS:

- Machine with 10" or wider opening

Box #6 (Hanging)

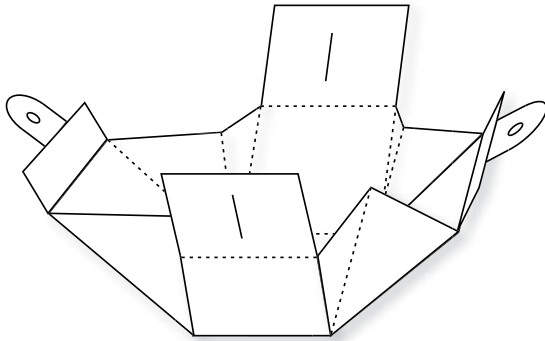


Figure A

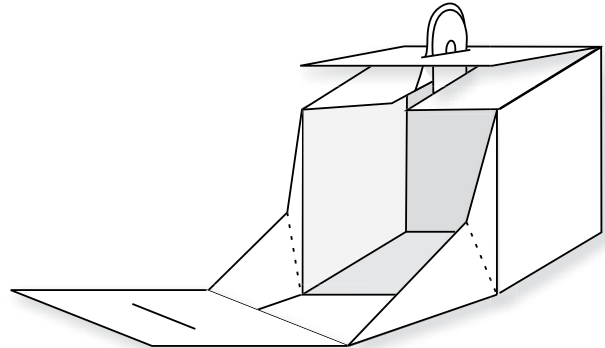


Figure B

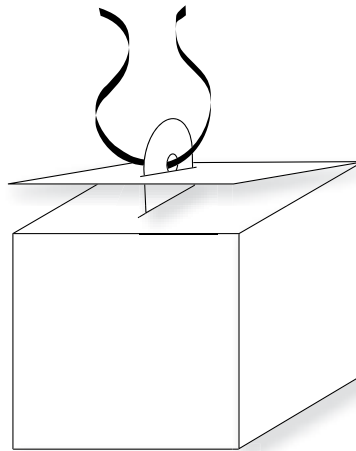


Figure C

1. Die-cut Box #6 from cardstock or other paper.
2. Fold on the perforated or crease lines as shown (Figure A).
3. Assemble the Box by pushing corner folds towards the center (Figure A).
4. To close, tuck the tabs through the slits in the top of the Box, one tab at a time (Figure B).
5. Thread ribbon through the holes in the tabs to hang (Figure C).

12440 - Box #6 (Hanging) (XL)

- Die available with perforation or crease rule. • Crease rule dies require Premium Cutting Pad.