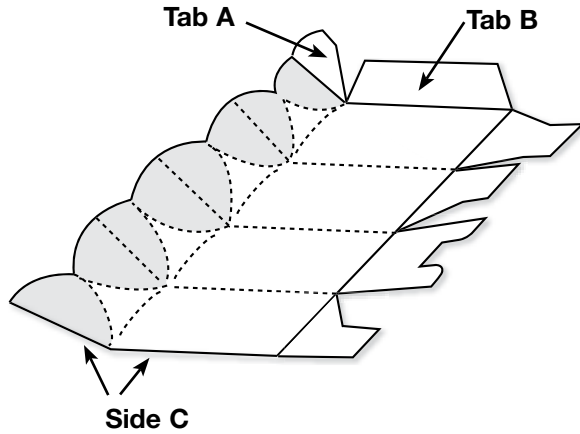


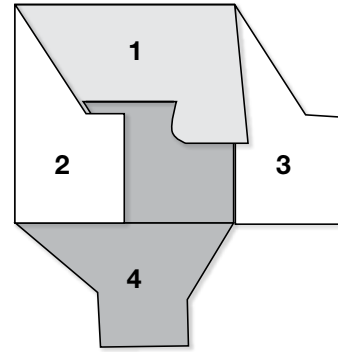
**REQUIREMENTS:**

- Machine with 10" or wider opening

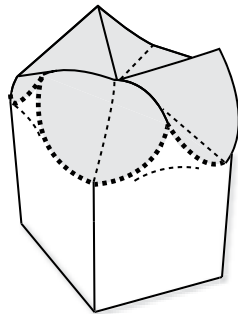
## Box #8



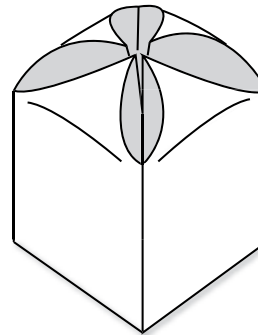
**Figure A**



**Figure B**



**Figure C**



**Figure D**

1. Die-cut Box #8 from cardstock or other paper.
2. Decorate with a personalized design or greeting while the Box is still flat.
3. Fold on the perforated or crease lines of the four sides of the Box.
4. Glue Tabs A and B to Side C (Figure A).
5. To seal the bottom of the Box, fold flaps 1, 2, 3 and 4 in that order (Figure B). The top of flap 4 slides into the notch in flap 1 for closure.
6. Press inward to fold along the perforated or crease line of all four arcs (Figure C).
7. To complete the Box, press inward on all four corners (Figure D).

### 12446 Box #8 (XL)

- Die available with perforation or crease rule. • Crease rule dies require Premium Cutting Pad.