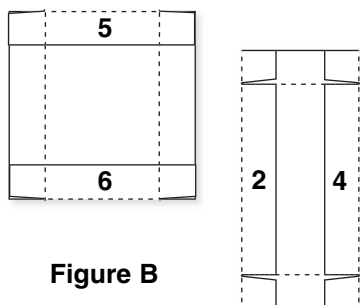


# INSTRUCTIONS

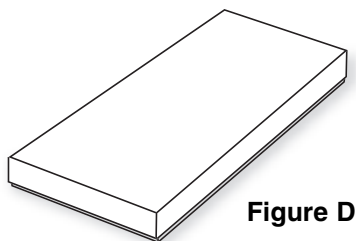
## Box #9 & Box #16

1. Die-cut Box #9 or Box #16 top and bottom from material of your choice using an Ellison® machine (Figure A).
2. It may be easier to decorate with a personalized design or greeting while the Box is still flat (paying attention to which piece is the top and bottom).

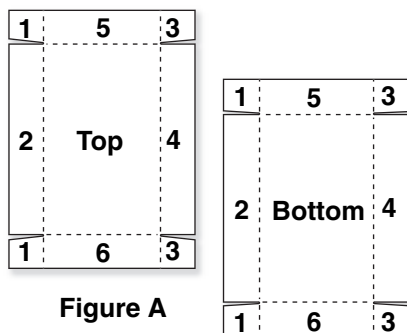


**Figure B**

4. Assemble the Box top and Box bottom by gluing tabs to inside of sides (1 to 2 & 3 to 4) (Figure C).
5. To complete Box place top on bottom (Figure D).

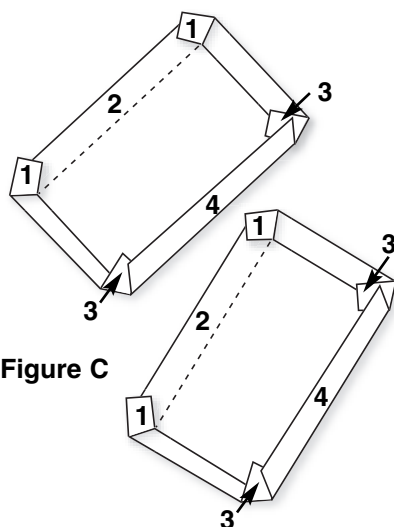


**Figure D**



**Figure A**

3. Fold all four sides on dotted lines as shown (Figure B).



**Figure C**

*Ellison®*

Corporate Headquarters  
25862 Commercentre Drive  
Lake Forest, CA 92630-8804 USA  
800.253.2238 • ellison.com

European Headquarters  
West Cork Business & Technology Park • Unit 5, Building D  
Clonakilty, Cork, Ireland  
Within UK: 08706 000625  
Outside UK: +353 (0) 23 63140 • ellison.com