

## Box, Takeout Carton

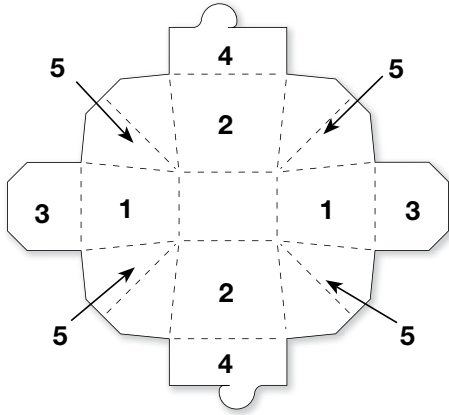


Figure A

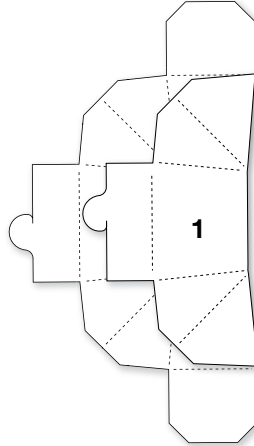


Figure B

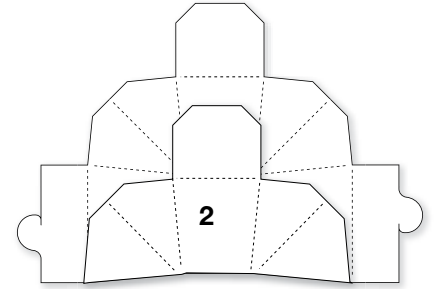


Figure C

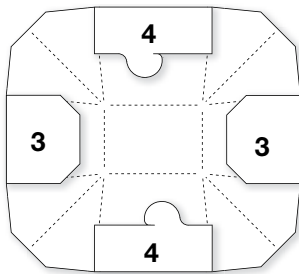


Figure D

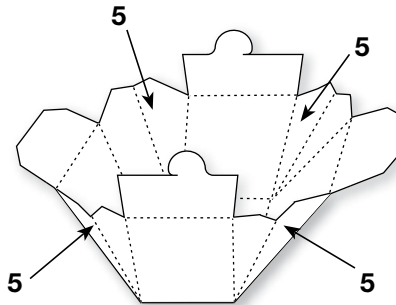


Figure E

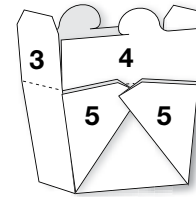


Figure F

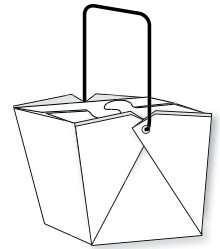


Figure G

1. Die-cut Takeout Carton Box from cardstock or other paper (Figure A).
2. Fold in sides (1) on perforated or crease lines (Figure B). Fold in top and bottom (2) on dotted lines (Figure C).
3. Fold in top flaps (3 and 4) (Figure D).
4. Assemble the Box by pulling out the corners (5) (Figure E).
5. Fold corners (5) around to meet on outside of Box. Attach to Box sides with glue or double-sided tape (Figure F).
6. Fold in top flaps (3). Fold in and interlock top (4) (Figure G).
  - Use 1/8" or 1/16" hole punch and attach wire or ribbon through the holes for handle (Figure G).

### 17409 Box, Takeout Carton

• Die available with perforation or crease rule. • Crease rule dies require Premium Cutting Pad.