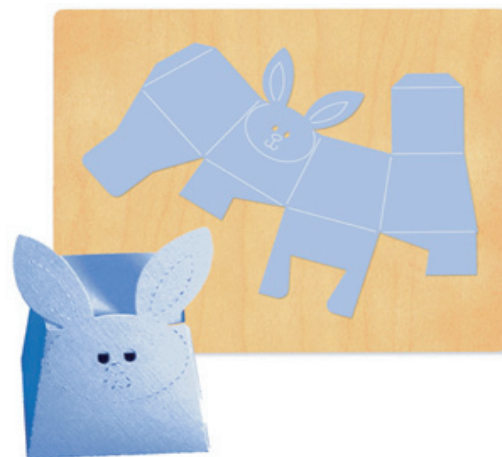


Bunny Box



Assembled Measurements
XL 2 1/2" x 2 1/2" x 2 1/4"
(3 3/4" to tip of Rabbit ears)

The teacher will die-cut the materials for student use prior to the lesson.

1. Die Cut XL Box #41 (Rabbit) using brown cardstock or construction paper.
2. Students may use crayons, chalk or colored pens to add highlights to the Rabbit Box.
3. Adhere a small strip of black paper behind the eye holes.
4. Fold on all perforated or crease straight lines. Use glue or double-sided tape to attach the side flap.
5. Cut a 6" length of ribbon and tie in a bow. Adhere to the front of the Box.
6. Attach a cotton ball to the back of the Box for a tail.

Ellison Supplies Needed

EL27502

*Ellison SureCut Die - Box #41 (Rabbit) -
Extra Large Size*

Machine Compatibility:

Prestige Pro (#19101)

Prestige Select (#19528)

RollModel (#26868)

XL LetterMachine (#15575)-retired

Other Supplies Needed

Construction Paper, 9" x 12",
Warm Brown

Chalk

Colored Pencils

Cottons Balls

Crayons

Double-Sided Tape

Glue

Colored Pens

Ribbon

Scissors