

REQUIREMENTS:

- Machine with 10" or wider opening

Card, Heart Folded

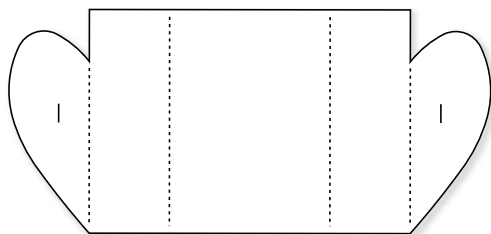


Figure A

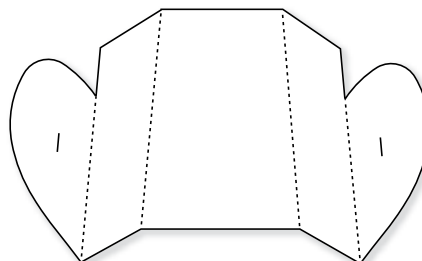


Figure B

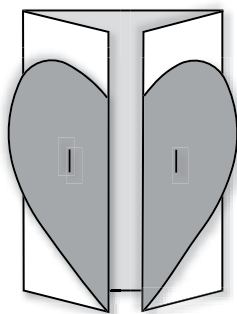


Figure C

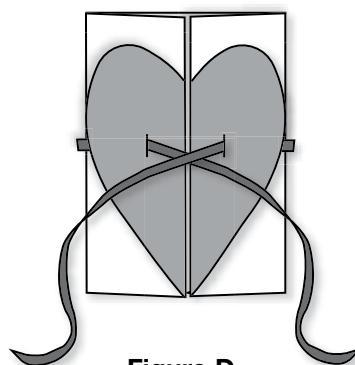


Figure D

1. Die-cut the XL Heart Folded Card from cardstock or other paper (Figure A).
 2. Fold on all perforated or crease lines (Figure B).
 3. Using contrasting colored paper, die-cut the portions of the Card that include the Heart and attach to the Card front, trimming any excess along the perforations.
 4. Cut 28" to 32" length of ribbon, thread through each slit as shown (Figure D) and tie in a bow.
- Fits in A2 envelope. See Catalog or Ellison.com for complete listing.

12718 Card, Heart Folded (XL)

- Die available with perforation or crease rule. • Crease rule dies require Premium Cutting Pad.