

REQUIREMENTS:

- Machine with 10" or wider opening

Card Holder

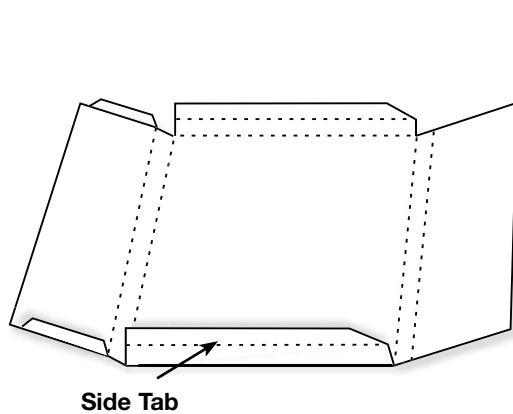


Figure A

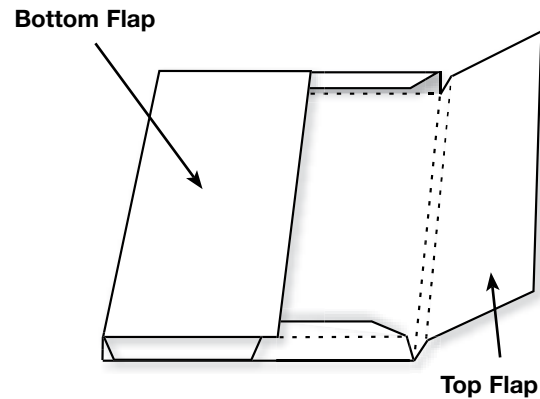


Figure B

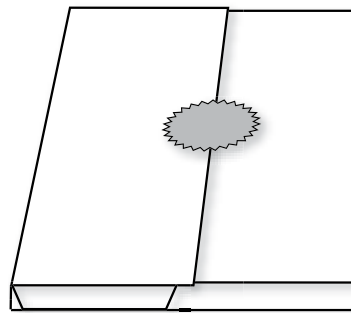


Figure C

1. Die-cut XL Card Holder from cardstock or other paper.
2. Decorate the Card Holder while it is still flat.
3. Fold on all perforated or crease lines (Figure A).
4. Bring bottom flap up and attach to side tabs using glue or double-sided tape (Figure B). If using glue, slide a rubber band around the sides to hold the flap in place until the glue dries.
5. Drop cards and envelopes inside and close with an Award Seal, sticker or other shape (Figure C).
 - Finished Card Holder will hold A6 cards and envelopes. See Catalog or Ellison.com for complete listing.
 - Makes a great holder for photographs.

12586 Card Holder (XL)

12108 Award Seal (SM)

- Die available with perforation or crease rule. • Crease rule dies require Premium Cutting Pad.