

REQUIREMENTS:

- Machine with 10" or wider opening

Card, Pop-Up Multiple #3

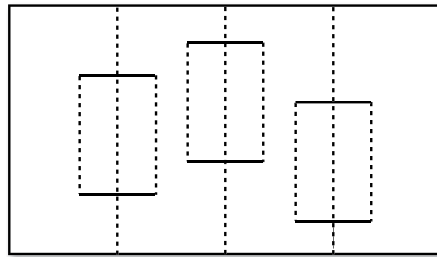


Figure A

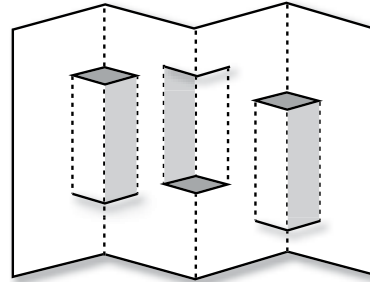


Figure B

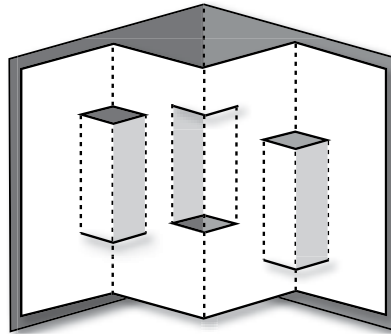


Figure C

1. Die-cut XL Pop-Up Multiple #3 from cardstock or other paper (Figure A).
 2. Fold on all perforated or crease lines to make the pop-up tabs pop forward or back (Figure B).
 3. Fold Card in half and close to reinforce the folds. Tiny Ellison die-cuts or stickers can be attached to each pop-up tab.
 4. Before cutting the XL Card Cover A6, attach the pop-up decorations. Close the Card to see if the pop-up decorations extend beyond the Card. Accomodate taller designs by cutting a larger XL Card Cover A7.
 5. Cut either Card Cover from contrasting colored paper. Fold the Cover in half and attach to Pop-Up Card as shown (Figure C).
- Fits in A6 or A7 envelope. See Catalog or Ellison.com for complete listing.

14343 Card, Pop-Up Multiple #3 (XL)
12720 Card Cover A6 (XL), 17788 Card Cover A7 (XL)

- Die available with perforation or crease rule. • Crease rule dies require Premium Cutting Pad.